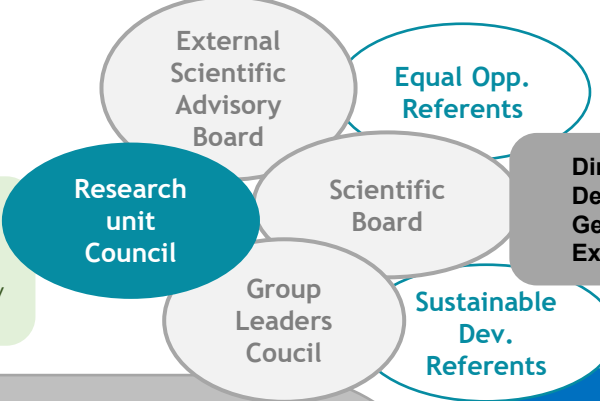




Organization chart 01-09-2024 : Institute of Human Genetics UMR 9002 CNRS - University of Montpellier

INTERNAL COMMISSIONS
Internal seminars – Animal facilities – Cell culture
Equipment & common spaces setting
Store & Purchases – Communication/Web – Quality
of Life at Work – Fair Data – Green Committee



Director : Philippe Pasero
Deputy Director : Corinne Grey
General Secretary: Céline Prono
Executive Assistant: Valérie Demuyt

Genopolys (UAR3656)
Scientific mediation
Marie Péquignot (Genopolys Inserm)
Agnès Duri (Genopolys INRAE)
Emmanuelle Ruzié *
Eric Jouffre *

Departments and research groups

GENOME DYNAMICS
Jérôme Déjardin

- Nuclear architecture in physiology and pathology
Charlène Boumendil
- Chromatin and cell biology
Giacomo Cavalli
- Non-coding RNA, epigenetics and genome stability
Séverine Chambeyron
- Biology of repetitive sequences
Jérôme Déjardin
- Meiosis and recombination
Bernard De Massy
- Gene regulation
Rosemary Kiernan
- Replication and genome dynamics
Marcel Méchali
- Machine learning and gene regulation
William Ritchie

GENETICS, CELL BIOLOGY AND DEVELOPMENT
Martine Simonelig

- Cell biology of RNA
Edouard Bertrand
- Neurogenetics and memory
Jean-Maurice Dura
- Epigenetic Chromatin Regulation
Kazufumi Mochizuki
- Development of pathology of the gonad
Francis Poulat
- Tubulin Code
Krzysztof Rogowski
- Systemic impact of small regulatory RNAs
Hervé Seitz
- mRNA regulation and development
Martine Simonelig

MOLECULAR BASES OF HUMAN DISEASES
Domenico Maiorano

- Molecular Virology
Monsef Benkirane
- Genetic instability and cancer
A. Constantinou Lab (Jihane Basbous-Mesnard)
- IMGT, the international ImMunoGenetics information System®
Sofia Kossida
- Genome surveillance and stability
Domenico Maiorano
- Epigenome modifications and genomic instability in normal and malignant B cells
Jérôme Moreaux
- Maintenance of genome integrity during DNA replication
Philippe Pasero

TECHNICAL PLATFORMS

- Platform of Histology (RHEM)**
Stéphanie Déjardin
- Cell imaging platform (MRI)**
Marie-Pierre Blanchard (BioCampus)
Julien Cau (BioCampus)
Julio Mateos Langerak
Jérémy Galtier (BioCampus)
- iExplore platform**
Frédéric Baudat (SIC) | Antoine Aze (SIC)
Stéphanie Déjardin | Nathalie Malirat
Christine Brun | [Mustapha Hany]
- Drosophila platform**
Frédéric Bantignies (SIC)
Stéphanie Chalmeton
Florian Cros - Arnaud Lecler
Anthony Philippe (50%)
- Organoid and human ES**
Domenico Maiorano (SIC)
Isabelle Peiffer
- Digital PCR platform**
Gaël Petitjean
- Spatial transcriptomics**
Edouard Bertrand (SIC)
Giacomo Cavalli (SIC)
Davide Normanno

TECHNICAL SUPPORT SERVICES

- Health & Safety**
Robert Orti *
Julie Saksouk (AP-20%)
Aymeric Chartier (PCR-10%)
- Technical service ***
Stéphane Bocquet
- Informatics ***
Vincent Arbaud
Jacques Faure
Pierre Codron
Clémence Berto
- Bioinformatics & computing**
Aubin Thomas
- Store**
Samuel Badaoui
Anthony Philippe (50%)
[Mustapha Hany]
- Washing, sterilization & cell culture preparation**
Benjamin Pardo (SIC)
Vincent Guionnet
Samuel Crémier

ADMINISTRATIVE SUPPORT SERVICES

- Financial management**
Kasma Amraoui
Soukaïna Boudhib
Kyle McHardy
Harizakanirina Rajaonarivelo
XXX
- HR management**
Jérôme Manuelle
Ikram Hajjaji
- Grant office**
Sandra Castang (DR13)
Valérian Morillas (DR13)
Franc Pattus (éméritat)
- Scientific mediation, Events organization**
Cyril Sarrauste de Menthière *
Emmanuelle Ruzié *

Philippe PASERO
Directeur de l'IGH

* IGH - Genopolys shared staff or service / SIC : Scientist-in-charge / BioCampus : UAR3426 staff located at IGH
DR13 : "Délégation Régionale Occitanie Est" staff hosted at IGH / [name] : Staff under a long-term leave